

# The Fisherman's Line

## Fly Fishers of Davis



P.O. Box 525 • Davis, California 95616

Member of:

The Federation of Fly Fishermen  
The Northern California Council of Fly Fishing Clubs

JULY-AUGUST 1980

Editors:

Ron Rabun  
756-6206

Cal Kado  
756-2083



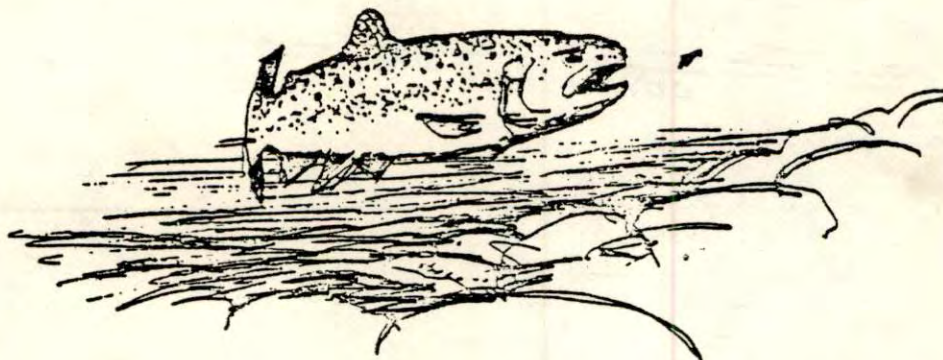
### MEETING:

Date: Tuesday, July 29, 1980  
Time: 6:00 p.m.  
Place: Putah Creek, Solano  
Lake Park Picnic Area



### BOARD MEETING:

Date: Tuesday, September 23  
Place: Cal Kado's home  
1106 Villanova Dr., Davis  
Time: 7:30 p.m.



### PROGRAM - Annual Putah Creek BBQ at Solano Lake Park

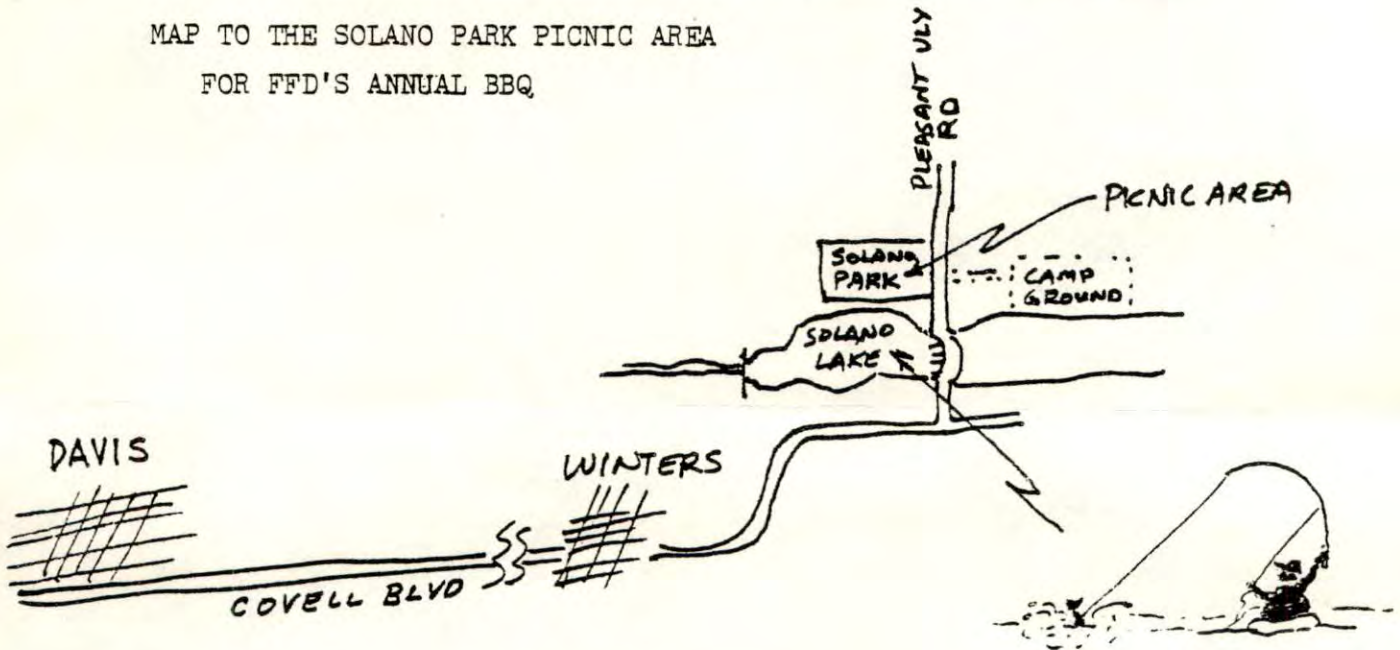
It is time again to cast ourselves in mass upon Putah. The evening will consist of a BBQ (BYOB;F), a demonstration of Putah fly fishing techniques by Mike Monroe, and other fly fishing frolic. You should bring your fishing paraphenalia and float-tube, raft, or pram if you want to fish in Solano Park area. Those without can wade carefully or fish the fast water area upstream. See the map showing how to get to Solano Park inside. Flies you may want to have on hand would be: #18/16 Black Beaver Nymph, #18/16 Hare's Ear Nymph, Brown & Olive Matuka #8, #12 Green Wooly Worm, #12 Black Leech.

President's Message:

Since this particular issue of our newsletter may be filled with fishing tales from Alaska and Yellowstone Park, I'll keep this brief. First, a reminder about our upcoming Putah Creek bar-b-que - be there if you want to get the word directly from that Lake Solano expert, Mike Monroe. Second, the registration forms for the NCCFFC Conclave '80 have gone out. If you've gotten your form, please send it in soon because the council has to get down to some nitty-gritty planning. If you didn't get the form, just let Ron, Orris, Jon or myself know and we'll get one to you. Finally, a quick report on the Trinity River at Lewiston - fishing has been slow but smaller fish can be taken on the ol' reliable Zug Bug fished on the dead drift.

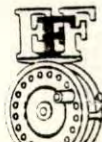
Sarge

MAP TO THE SOLANO PARK PICNIC AREA  
FOR FFD'S ANNUAL BBQ



SPECIAL BULLETIN

The Walnut Avenue access point on the Yuba River, Yuba County is no longer open to the public. Teichert Construction Company's Rock Plant (LeRoy Gingrich, manager), owner of the access property, will no longer permit fishing access because of various abuses to the company's land (e.g. wild parties, trash, debris, too many cars, noise, etc.). Entrance to the property may only be obtained by special permission. There have been several arrests made for trespassing.



THE  
NORTHERN CALIFORNIA COUNCIL  
OF  
FLY FISHING CLUBS

PRESENTS --



YOUR HOSTS --

DAVIS FLY FISHERS  
OF DAVIS,

DELTA FLY FISHERMEN  
OF STOCKTON,

CALIFORNIA FLY  
FISHERMEN  
UNLIMITED OF  
SACRAMENTO.



OCTOBER 3, 4, 5, 1980

*A Regional Council of the Federation of Fly Fishermen*

- \* CHRIS KORICH - 1979 A.C.A. All Round Casting Champion, Internationally famous for his casting prowess.
- \* RON ANDERSON - professional photographer, graduate of Brooks Institute of Photography, avid fly fisherman.
- \* WALTON POWELL - son of E.C. Powell, founder of the Powell Rod Company, Chico, California.
- \* ART FREY - professional rod builder and collector of fly fishing memorabilia.
- \* MIKE MONROE - of THE FLY HUTCH, entomologist and well-travelled fly fisherman from trout to tarpon.
- \* ANDY PUYANS - owner of CREATIVE SPORTS, writer, frequent Conclave participant, another collector.
- \* JOE SHIRSHAC - the resident expert on Pyramid Lake and the American, Yuba and Feather Rivers.
- \* PERK PERKINS - of the ORVIS Company, a name synonymous with fly fishing in the United States.
- \* MAGGIE MERRIMAN - professional fly fishing instructor, a rarity in a sport dominated by men.
- \* MARTY SELDON - an ever-active Executive Vice-president, Resources Development, FFF.
- \* CHAS. FULLERTON - Director, California Department of Fish and Game.
- \* HAL JANSSEN - float tube expert and well-versed in fishing the still waters of the west
- \* ED GIVENS - member, Salinas Valley Fly Fishermen, historical displays.
- \* CHUCK STRANAHAN - of HAT CREEK ANGLERS, sponsor of his own fly fishing school.



- OUR CAST ---
- \* J. RAY ARNETT - dedicated fly fisherman, former Director, Department of Fish and Game.
  - \* LAWRENCE SUMMERS - a pioneer, with Bob Edgley, in fly fishing for sharks.
  - \* PRESS POWELL - the third generation of Powell family rod makers, Chico Fly Fishermen.
  - \* STEVE RAJEFF - a six-time World Fly Casting Champion, a sensational tournament competitor.
  - \* JOE KNAPP - dealer in LITTLE DRIFTER drift boats and an expert in their use.
  - \* DOUG SWISHER - an energetic and innovative fly tyer, still working on new techniques and ideas.
  - \* NEIL BOHANNON - of the FLY HUTCH in Santa Clara, whose many patterns have appeared in fly fishing magazines..
  - \* JIM VICTORINE - of the SIERRA FOOTHILL FLY & ROD SHOP, member of the Conclave Planning Committee.
- ERIC GERSTUNG - California Department of Fish & Game, expert on trout - endangered species.

+++ plus - tables full of professional fly tyers.....



# NCCFFC CONCLAVE '80

October 3, 4, & 5, 1980

## INSTRUCTIONS

Please complete both sides of the registration form and return with total remittance as computed below:

## REGISTRATION FORM

Name \_\_\_\_\_

Address \_\_\_\_\_

City \_\_\_\_\_ State \_\_\_\_\_

Zip Code \_\_\_\_\_

Other Names:

1. \_\_\_\_\_
2. \_\_\_\_\_
3. \_\_\_\_\_
4. \_\_\_\_\_

## COMPUTATION OF FEES

Registration . . . . . \$ \_\_\_\_\_

Meals . . . . . \$ \_\_\_\_\_

Tours . . . . . \$ \_\_\_\_\_

TOTAL \$ \_\_\_\_\_

Make checks payable to "NCCFFC CONCLAVE '80" and mail to:

NCCFFC Conclave '80  
P.O. Box 525  
Davis, CA. 95616

## REGISTRATION

Single: # \_\_\_\_\_ persons at \$10.00/\$ \_\_\_\_\_  
Youths under 16 admitted free

## MEALS

### SATURDAY—WESTERN BUFFET DINNER

FEATURES: Baron of Beef, Glazed Ham, BBQ Chicken and assorted Vegetables and Salads

# \_\_\_\_\_ Buffet Dinners at \$15.00/\$ \_\_\_\_\_

### FRIDAY—BUFFET BRUNCH

FEATURES: Eggs, Ham, Beef Stroganoff, Crepe Loraine, Chopped Beef, Assorted Salads and Hash Browns

# \_\_\_\_\_ Buffet Brunches at \$10.00/\$ \_\_\_\_\_

## LODGING

Lodging reservations can be made either with your NCCFFC Conclave Registration or directly with the Woodlake Inn. Complete the enclosed WOODLAKE INN RESERVATION FORM with your deposit (please make separate check payable to Woodlake Inn) and forward with your NCCFFC Conclave registration or directly to Woodlake Inn.

The special NCCFFC group rates are:

Single . . . . . \$29.00 per night

Double . . . . . \$35.00 per night

(exclusive of applicable taxes)

You may call the Woodlake Inn at 800-852-7666 (Sacramento, 916-922-6251)

Please answer:

(Yes/No) Do You Plan to Stay at Woodlake Inn? \_\_\_\_\_

## SACRAMENTO TOUR

A 5-hour tour of Historical Sacramento has been arranged for interested persons. The tour will begin Saturday at 9 a.m. originating at the Woodlake Inn. The cost of the Sacramento Tour is \$10.50 per person.

# \_\_\_\_\_ Persons for the tour at \$10.50 per person/\$ \_\_\_\_\_

## RECENT CLUB OUTINGS

Outings to the Karluk River, Kodiak Island, Alaska and to Yellowstone-Montana Rivers proved to be highly successful. Detailed reports of both adventures will appear in the next newsletter and as subsequent club programs.

KNOWLEDGE of local waters is important and it is often wise to carry stream thermometers and ancillary equipment to measure stream potentials. AN overview of the streams and lakes of Yellowstone Park, Montana and Idaho are given below. General fly patterns on these waters depended on water conditions and insect life, both of which are reflected by water temperature and air movement (windy vs. calm days). The green drake hatch on Henry's Fork of the Snake River is over; various smaller mayflies and caddis appeared periodically during the day and evening.

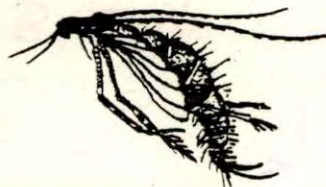
### ASSESSMENT OF THE IDAHO, MONTANA AND YELLOWSTONE PARK DRAINAGE

Stream	Water temp. °F	Fish	Assessment
Silver Creek	60.5	Rainbow, Brook	Highly productive
Snake-Henry's Fork	62	Rainbow, White	Productive
Moose Creek	54	Brook, Rainbow	Productive
Lower Madison	62.5	Rainbow, Brown, White	Highly Productive
Upper Madison	70.5	dormant	Unproductive
Firehole	74	dormant	Unproductive
Slough Creek	52	Cutthroat, Rainbow	Productive
Yellowstone	57	Cutthroat	Highly productive
Yellowstone Lake	57	Cutthroat	Highly productive
Lewis	56	Brown	Productive
Lewis Lake	56	Brown	Productive
Snake	65	White, Cutthroat	Semi-productive

Data collected by Cal Kado, Bill Schnathorst and Mike Hoffman, 7/10-7/20



Caddis Larvae



Pupae



Adult



Respective Fly Patterns